

Info Sheet Market Huts 2018

(for traders and craftspeople)



The rental hut system “**EDI**” (see page 2 for details) can be used on the entire market and is mandatory for certain areas. For the rental price of the fully equipped hut in different sizes, please refer to the Advertisement.

1. Requirements for trader-owned market huts

The following criteria must be met:

- Admissible are cottages with gabled roofs (roofs facing forward) and pointed gable roofs (side roofs). We highly appreciate lattice side windows which create a uniform transparency to the sale sides.
- Wood panelling are to be glazed dark brown (rosewood, ebony).
- Roofs must be designed uniformly – permitted are red roof tarpaulins only.
- A voluminous green garland (artificial material) must be mounted on the lower roof front and visible sides, equipped with a LED-fairy lights (sumptuous glitter sparkle with lots of light spots) in **warm white** light colour.

2. Hut design and decoration in general (rented and owned huts)

Traders are responsible for the design and decoration of the market hut. In accordance with the traditional character of a romantic Christmas market, a harmonious overall picture of pre-Christmas mood is to be provided through the distinct Christmassy design of the market sales outlet. All huts get an illuminated roof and/or a front decoration – the elements are provided and mounted by the organisers. The prerequisite for this is a solid and stable roof. In addition, a natural and individual design of the roof and the front area is welcome according to prior arrangement.

3. Requirements for the design and decoration of the sales outlet (rented and owned huts)

- Please use warm white light only; flashing-effects, running lights, etc. are prohibited.
- Brushwood and decorative elements must be made of natural materials. Figures made of plastic and plastic trees are not permitted.
- Outside, veneering of any kind, airbrush materials, banners, displays, advertising signs, including descriptions of assortments printed on plastic signs, are expressly prohibited.
- The inside of the hut and the display are to be lined with materials.

Note:

Compliance with the foregoing requirements is strictly controlled. We reserve the right to make changes/repairs at your expense. Please pay close attention to the mandatory requirements!

4. Rental hut system “EDI”

The huts feature an exceptional appearance and optimal functionality – decades of market experience were taken into account:

- Huts are constructed modular in 2 m units (available are 4, 6 and 8 m huts).
- Thanks to the shutters, the huts can be closed in a few seconds from the outside.
- If desired, the entire front can be opened to use the hut as a walkable version.
- The hut is equipped with a sturdy wooden roof and a wooden floor.

Side lattice windows are attached, which must not be covered during the sales period.

The rental price includes the following equipment

Illumination: In addition to the illuminated decoration, there are LED-fairy lights mounted on the lower roof front. On the inside, the hut is equipped with a perfect lighting system (light garland for room lighting and power rail with spotlights for the table display).

Counter: Consisting of two separate, closely connected countertops (each 190,5 cm x 91,5 cm). There is storage space below the counter.

Grid: Above the counter attractive detachable wire grids with 80 cm depth are attached for an optimal presentation of the hanging decoration. There is additional storage capacity above the grids (for lighter items only!).

Shelf: The system with cantilevers (at the back wall) can be adjusted to meet your needs (up to 4 shelves per 2 m width). The size of one single shelf is 28 cm x 189 cm.

Lock system: The door has two provided lockers, both shutters can be locked with a set of provided padlocks. Two sets of keys are issued.

Electricity demand

Please consider the pre-installed lighting elements (with the following consumption values) when determining your power needs for the rental huts:

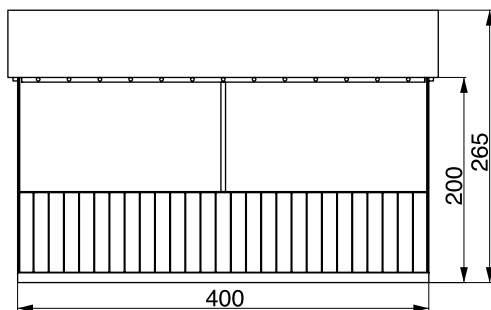
4 m hut - 0.75 kW/h

6 m hut - 1.15 kW/h

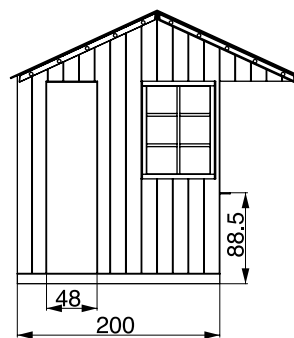
8 m hut - 1.45 kW/h

Dimensions (in cm)

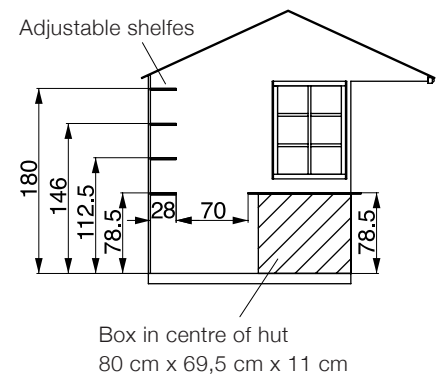
Front view



Side view



Side view (open)



Interior view

